



Piglet's Portfolio *of Priceless* Potholder Patterns

SECTION II Basketweave

*Created By Piglet Evans &
Matthew Simon Cavalletto*



December 2023 Edition



For the latest charts, visit potholders.piglet.org.
You may use, print, copy, & share these charts freely.
Open content licensed under Creative Commons CC-By-SA.

Contents: Section II — Basketweave

Two-Two Basketweave

Two-Two Basketweave	27, 18	1
Basketweave Stripes	27, 18	3
Basketweave Log Cabin	28	5
Basketweave Steps	28, 18	6

Three-Three Basketweave

Three-Three Basketweave	27, 18	8
-------------------------	--------	---

Half Basketweave

Half Basketweave	27	10
Half Basketweave Stripes	27, 18	11

Two-One Basketweave

Two-One Basketweave	27, 18	13
Two-One Basketweave Grid	18	15
Two-One Basketweave Bands	19	16

Alternating Basketweave

Fragile Ladders	27	17
Chunky Ladders	27	18

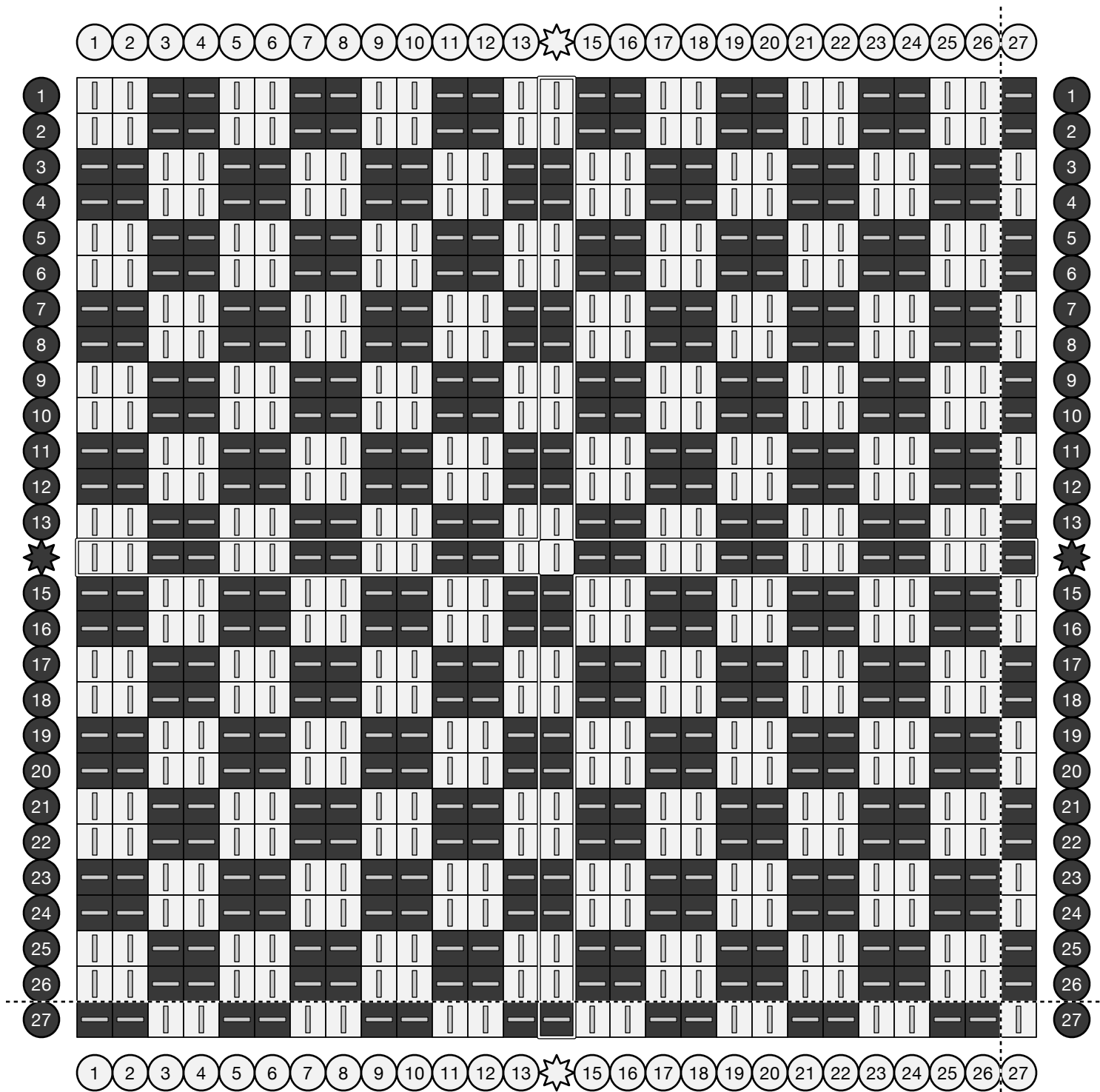
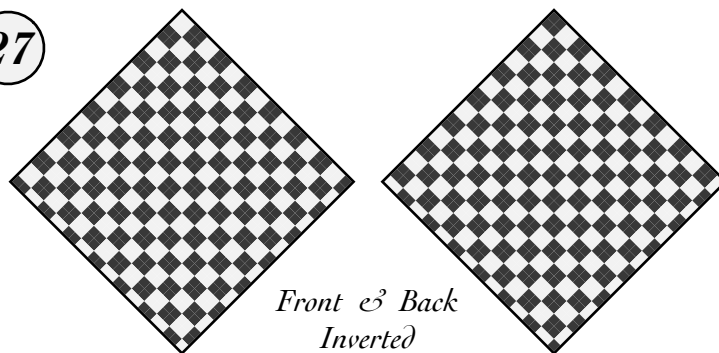
Two-Two Basketweave

27

For an absorbent coaster, try a basketweave tabby.

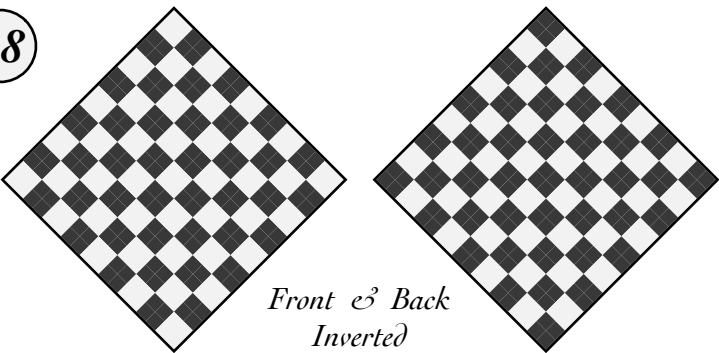
Similar to a tabby, but with multiple warp and weft threads in each shed.

Skip the last warp and weft for greater symmetry.



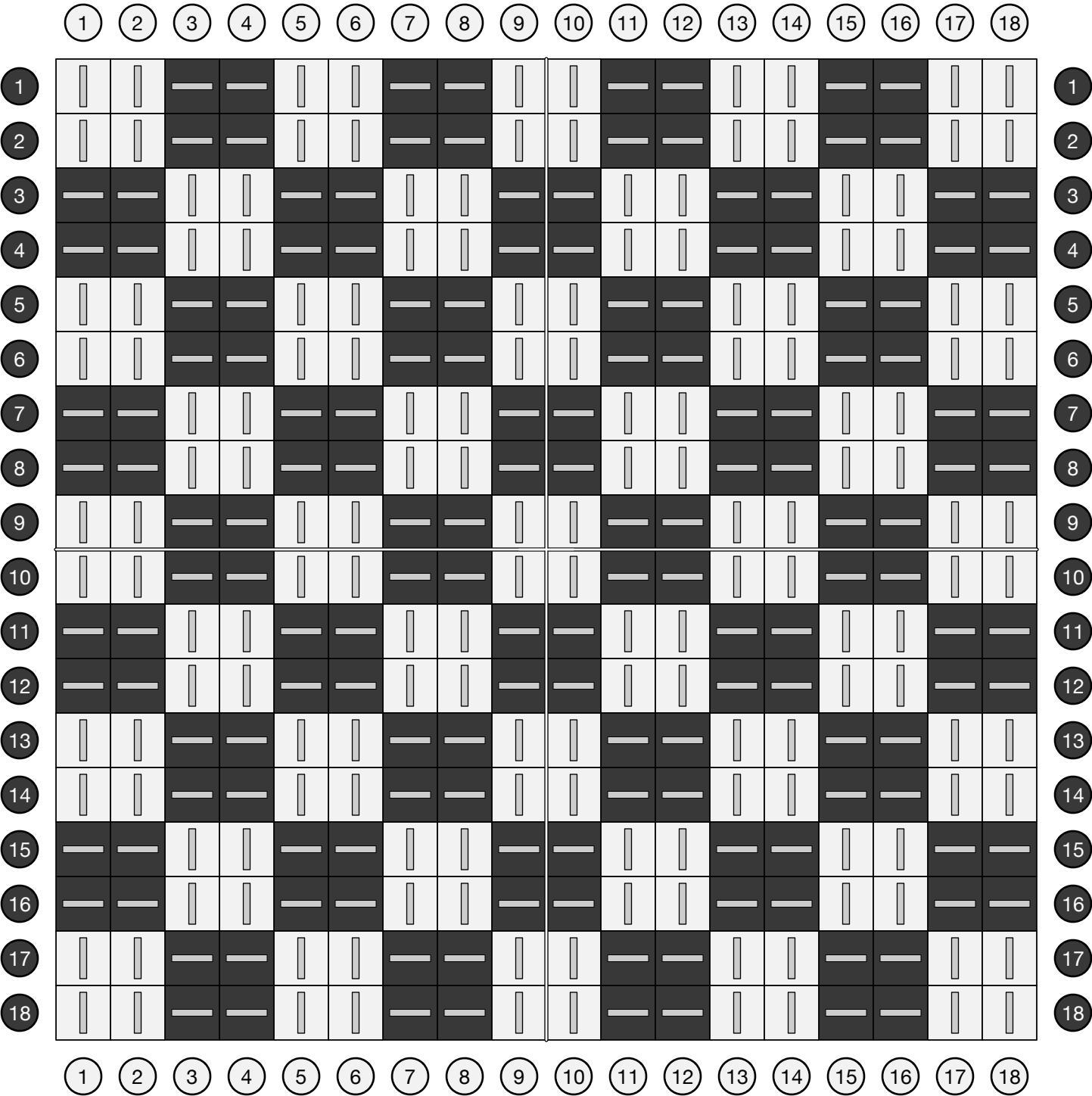
Two-Two Basketweave

18



For an absorbent coaster, try a basketweave tabby.

Similar to a tabby, but with multiple warp and weft threads in each shed.

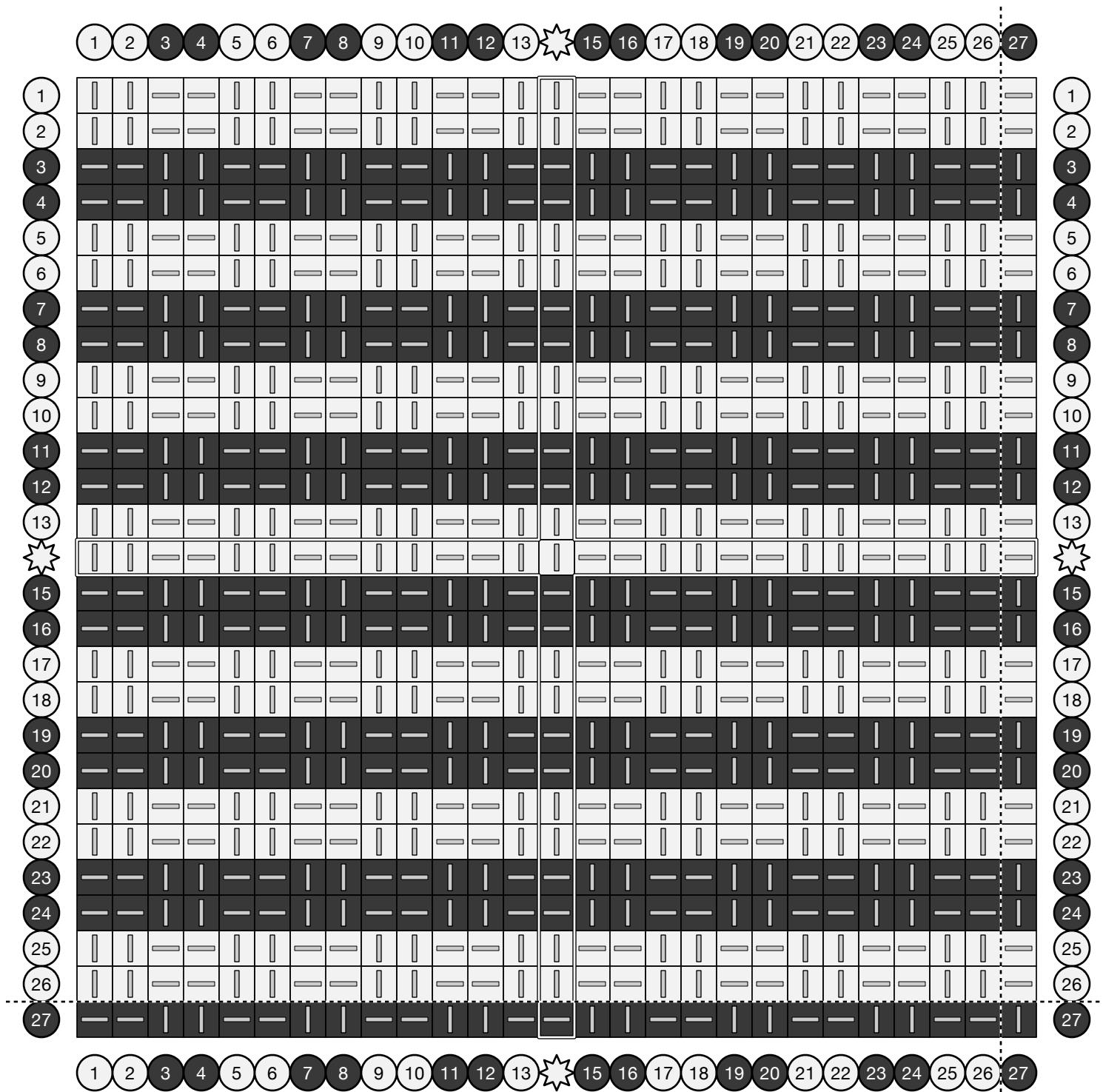
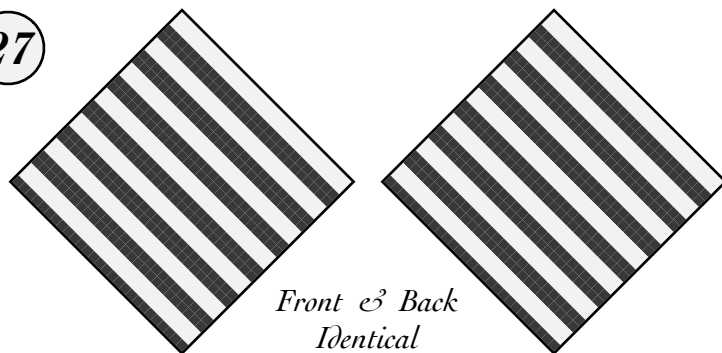


Basketweave Stripes

Double weave with alternating loop colors.

Skip the last warp and weft for greater symmetry.

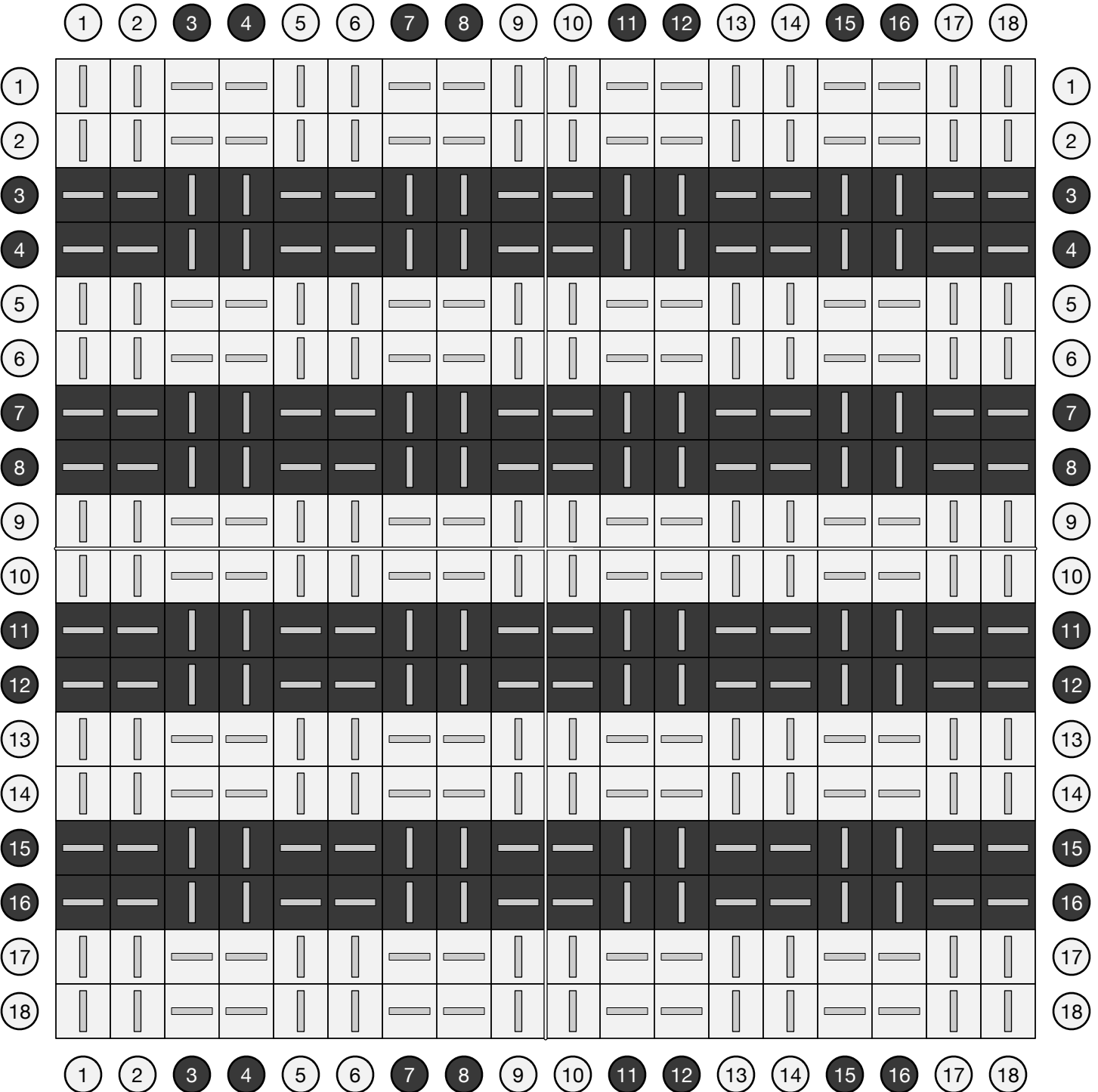
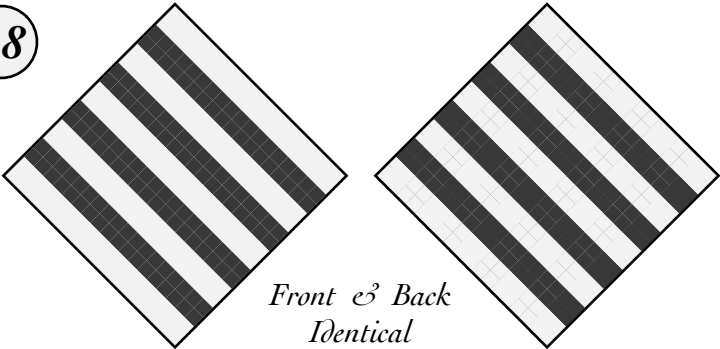
27



Basketweave Stripes

For an absorbent coaster, try a basketweave tabby.

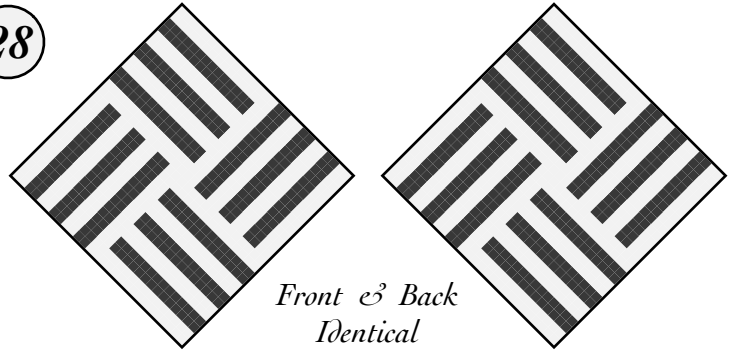
18



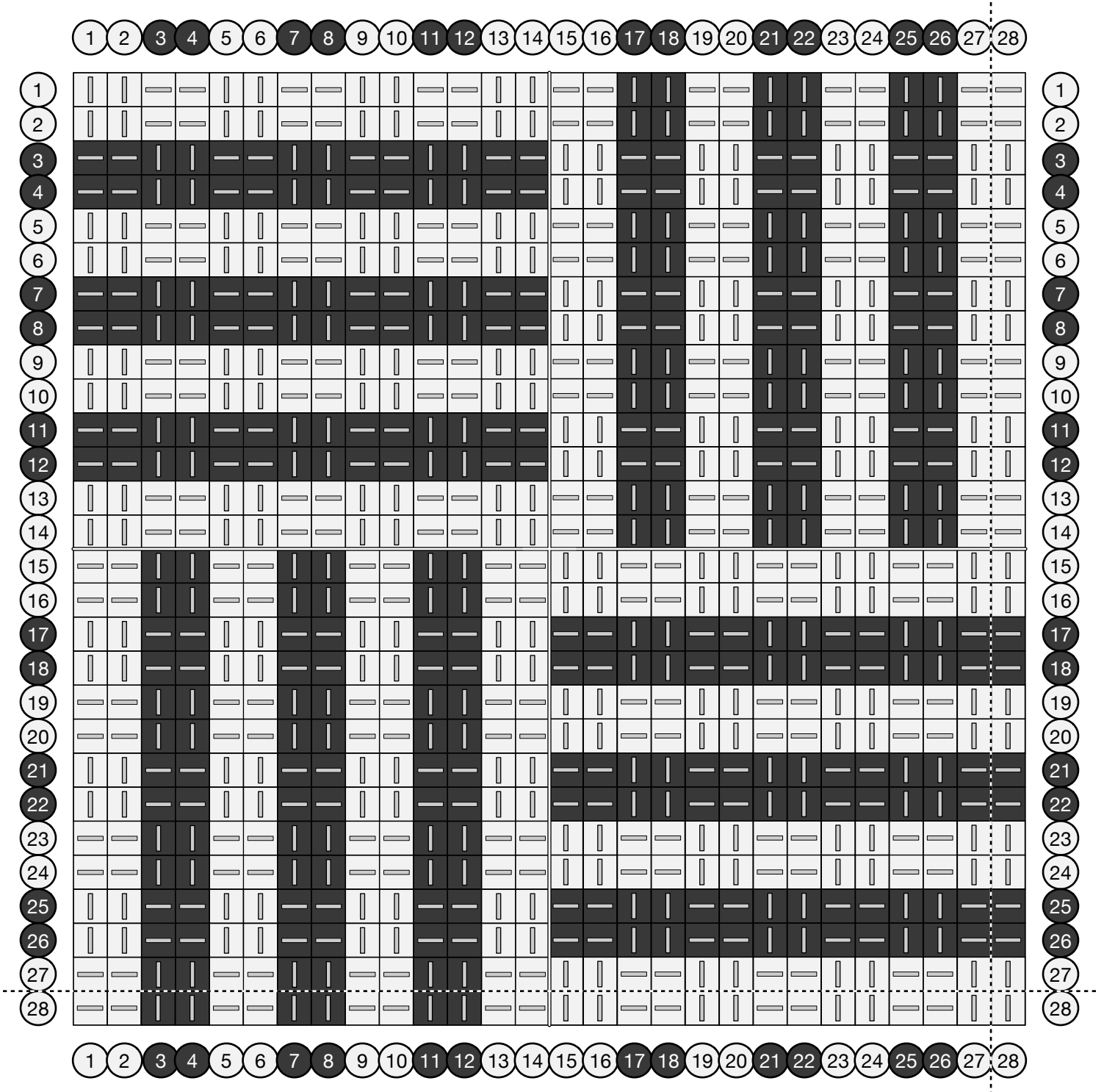
Basketweave Log Cabin

Double weave with alternating loop colors.

(28)

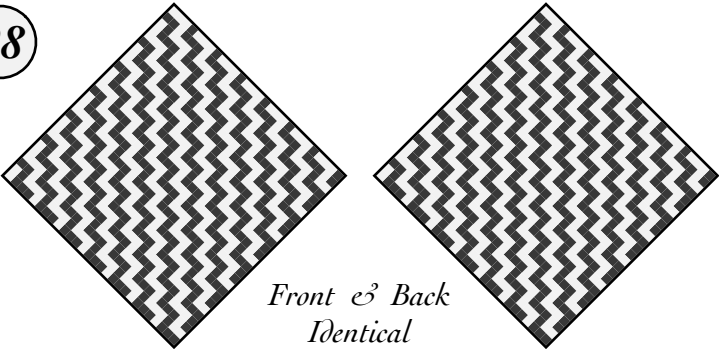


*Front & Back
Identical*

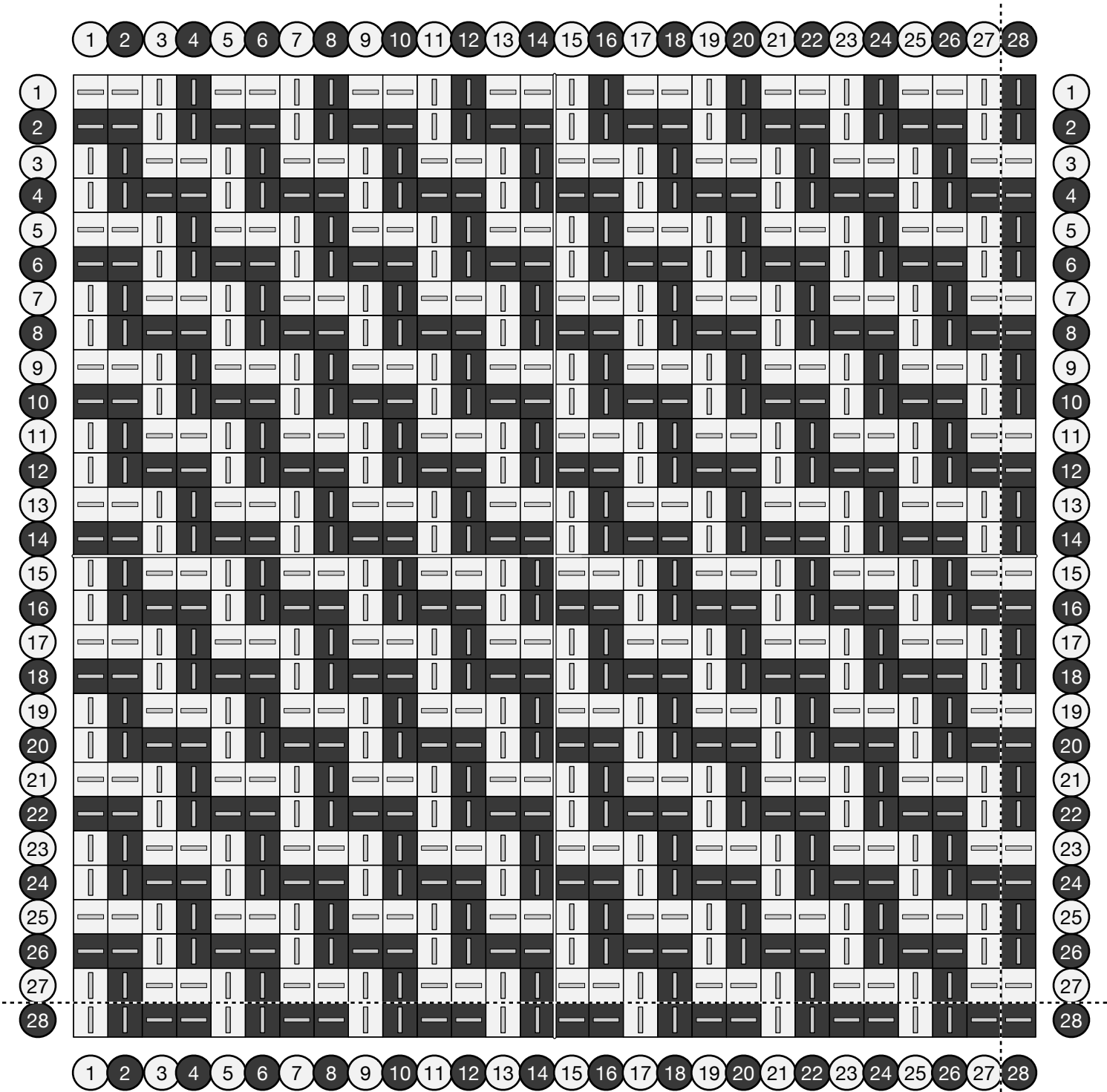


Basketweave Steps

28



Front & Back
Identical

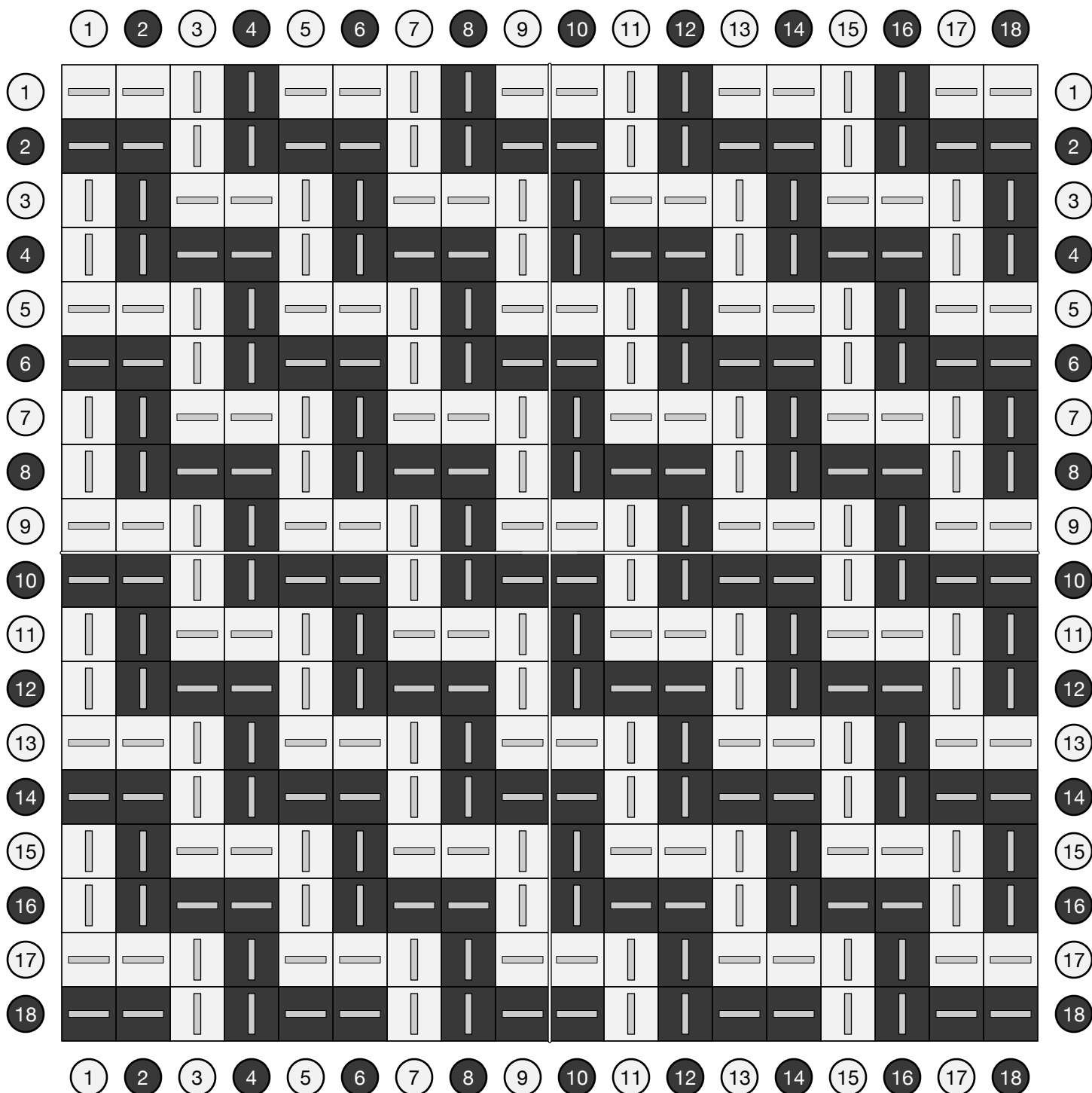
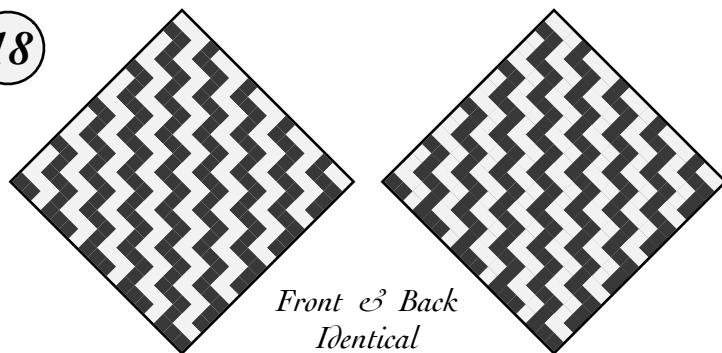


Basketweave Steps

For an absorbent coaster, try a basketweave tabby.

Similar to a tabby, but with multiple warp and weft threads in each shed.

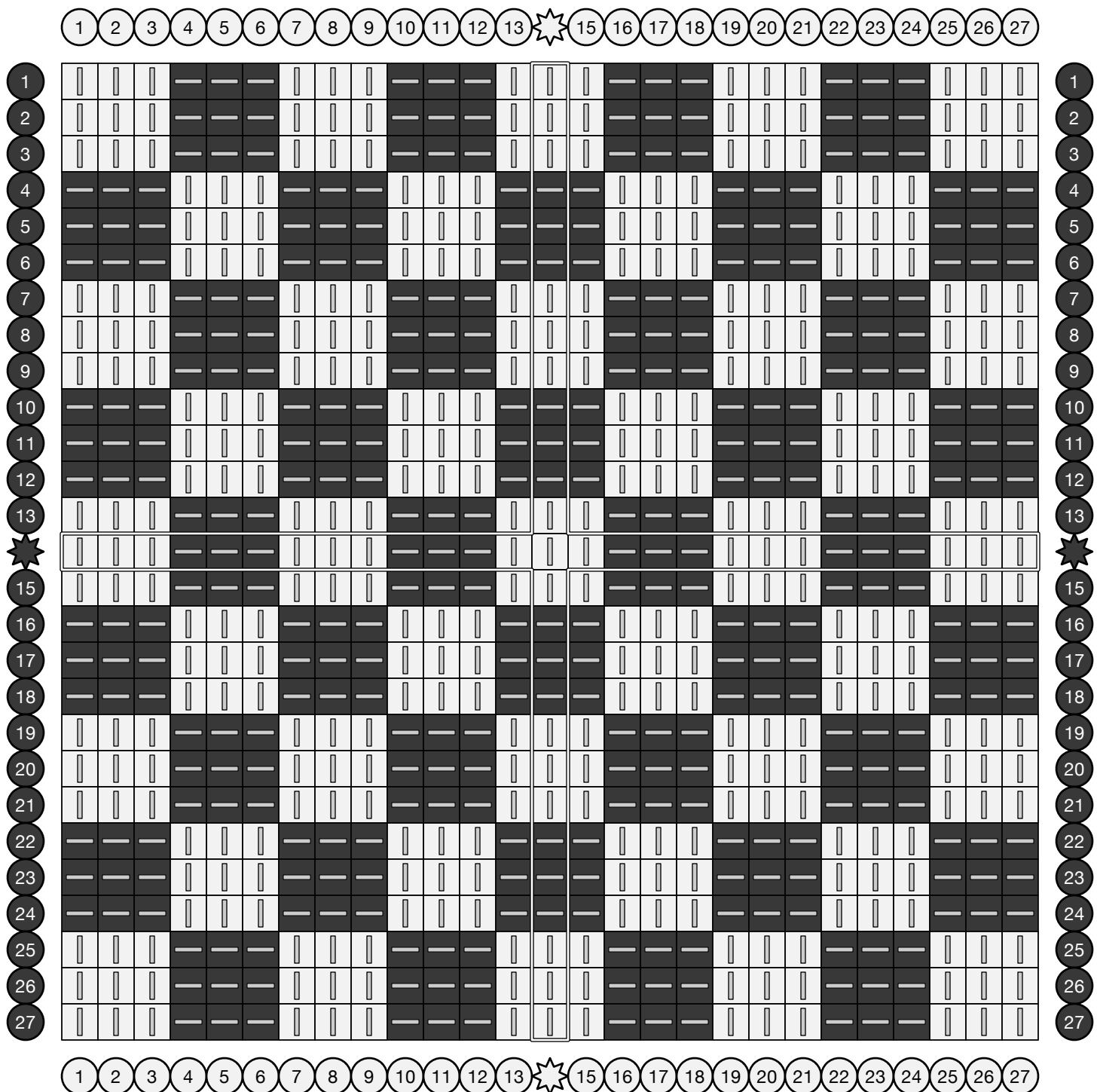
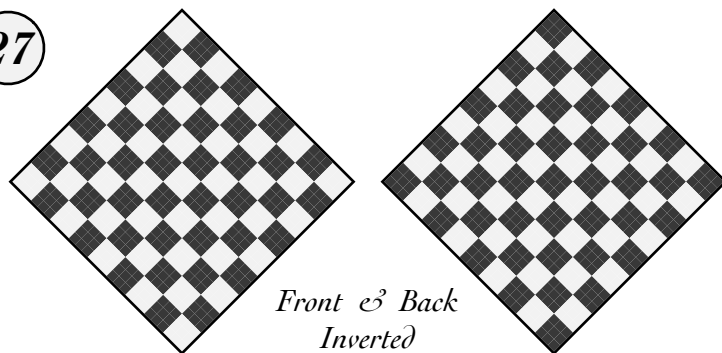
18



Three-Three Basketweave

27

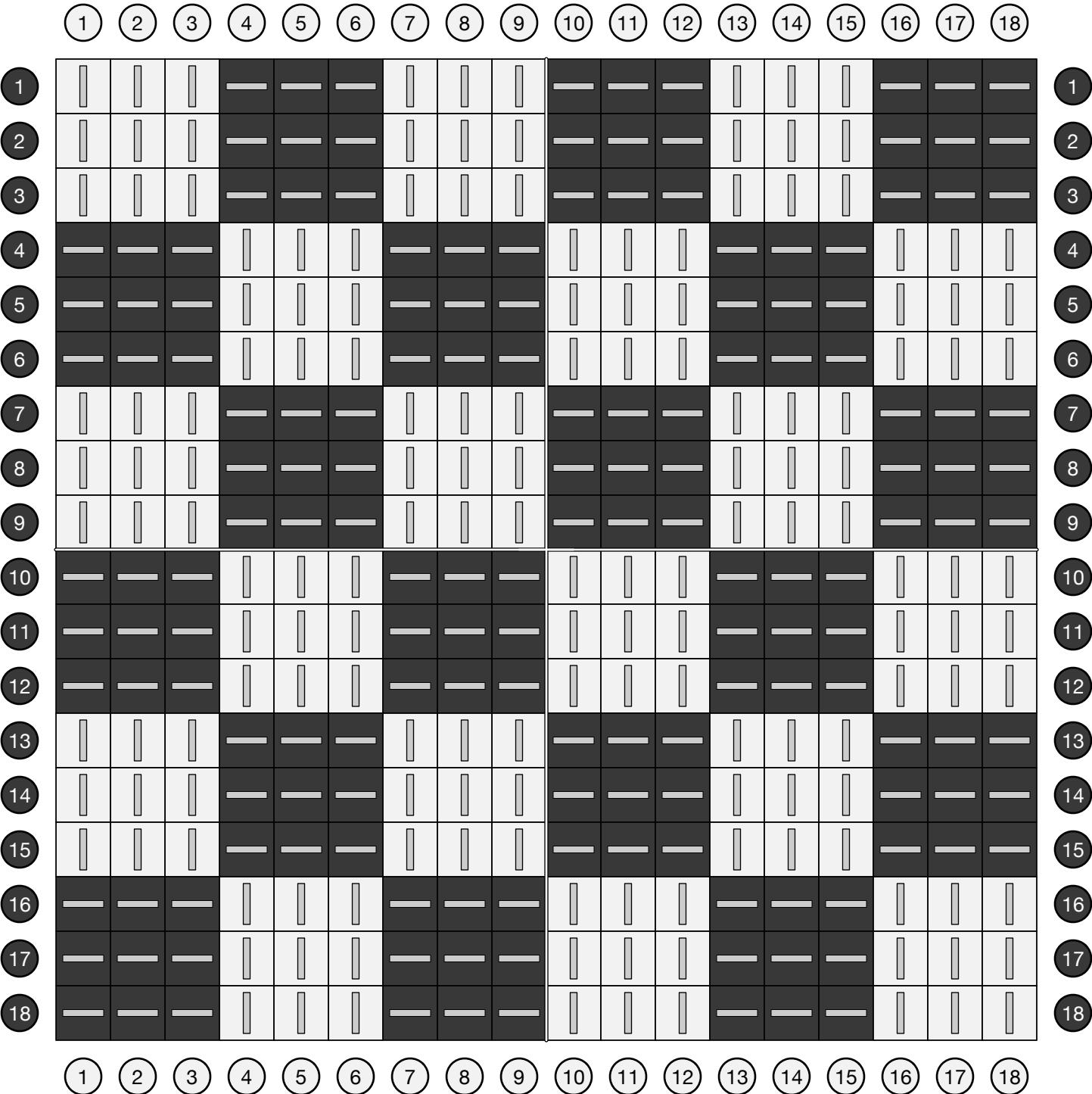
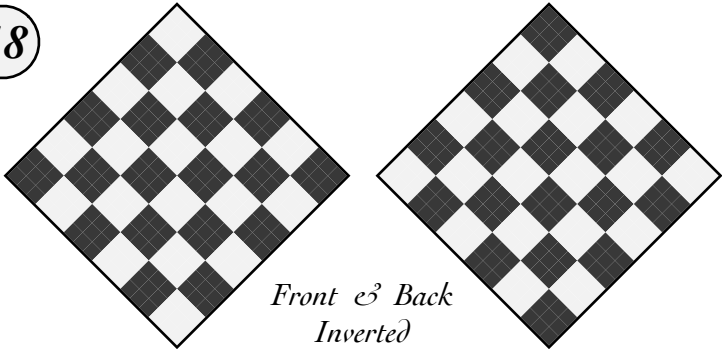
Similar to a tabby, but with multiple warp and weft threads in each shed.



Three-Three Basketweave

Similar to a tabby, but with multiple warp and weft threads in each shed.

18

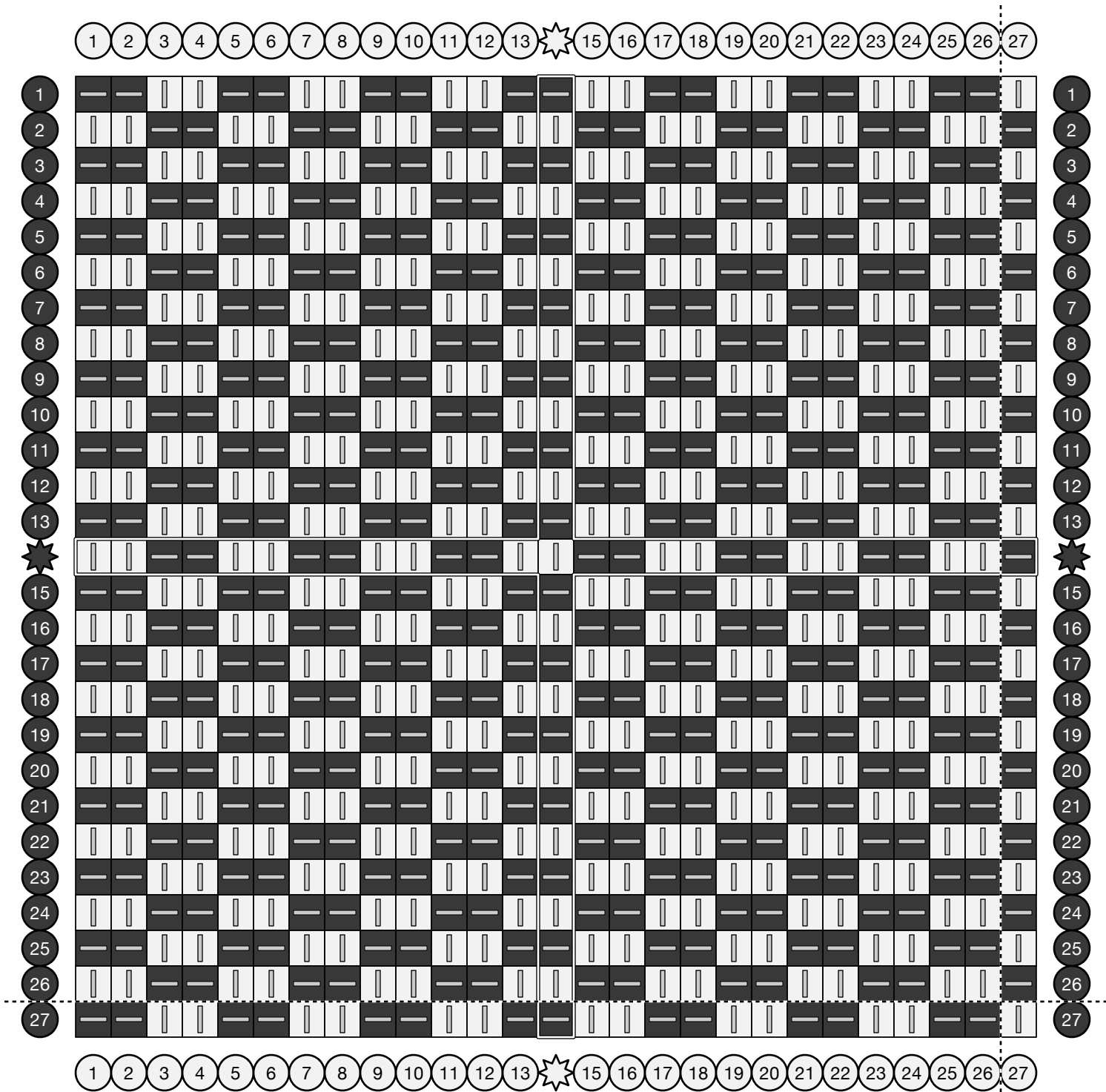
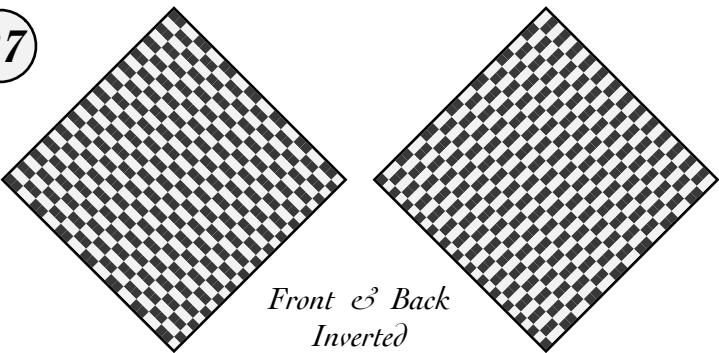


Half Basketweave

Woven over two/under two, alternating on each row.

Skip the last warp for greater symmetry.

27



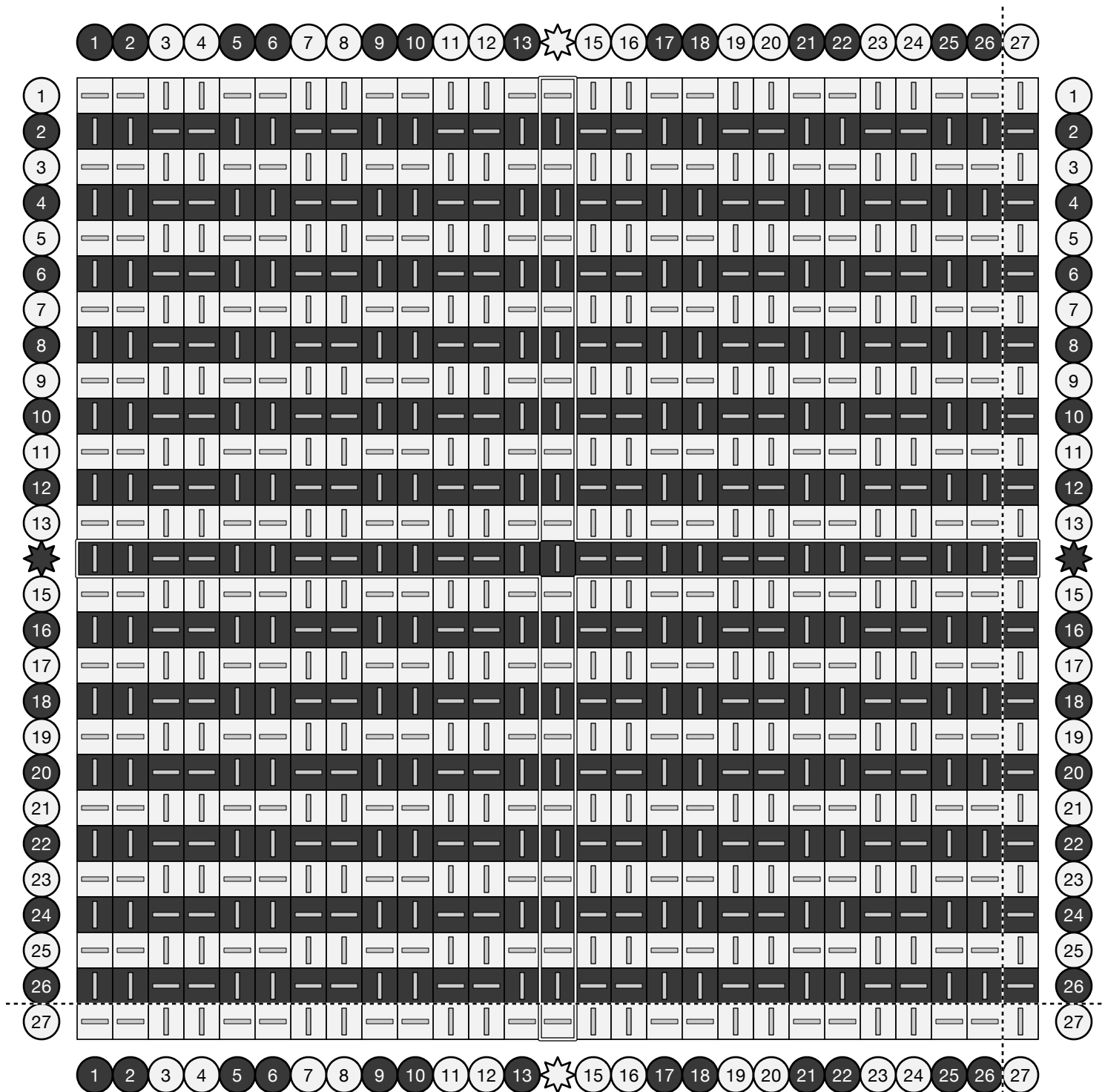
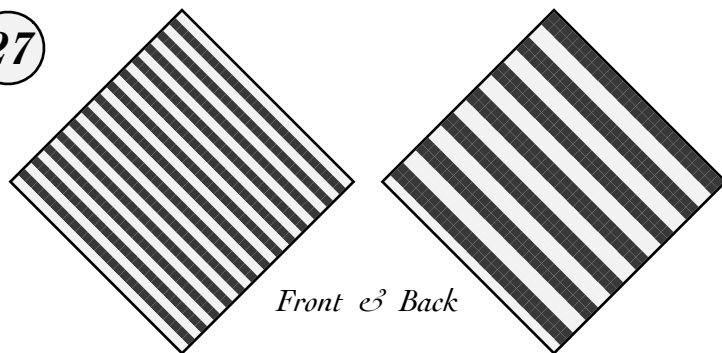
Half Basketweave Stripes

27

Woven over two/under two, alternating on each row, with colors cycling in the same way.

Produces thin stripes on one face and thick on the other

Skip the last warp for greater symmetry.

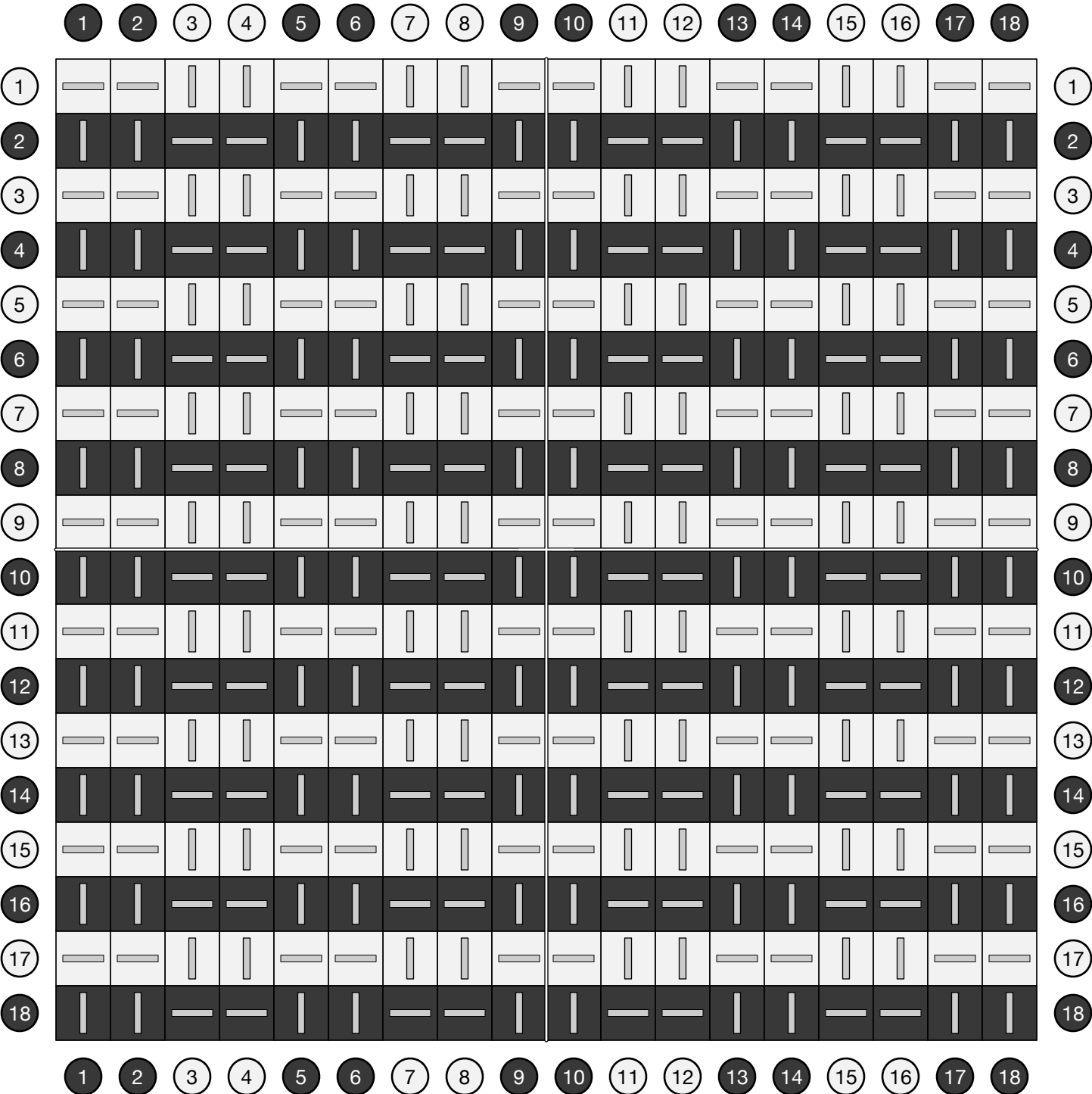
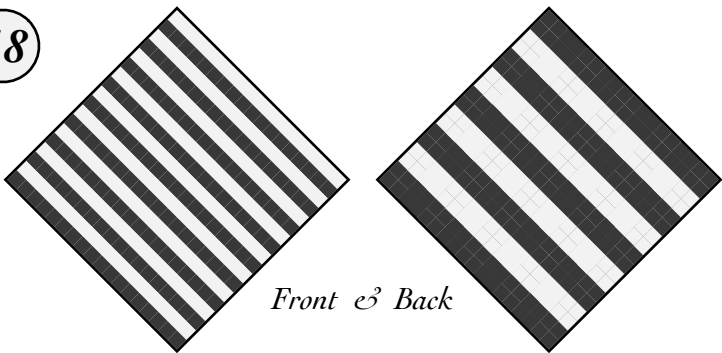


Half Basketweave Stripes

Woven over two/under two, alternating on each row, with colors cycling in the same way.

Produces thin stripes on one face and thick on the other

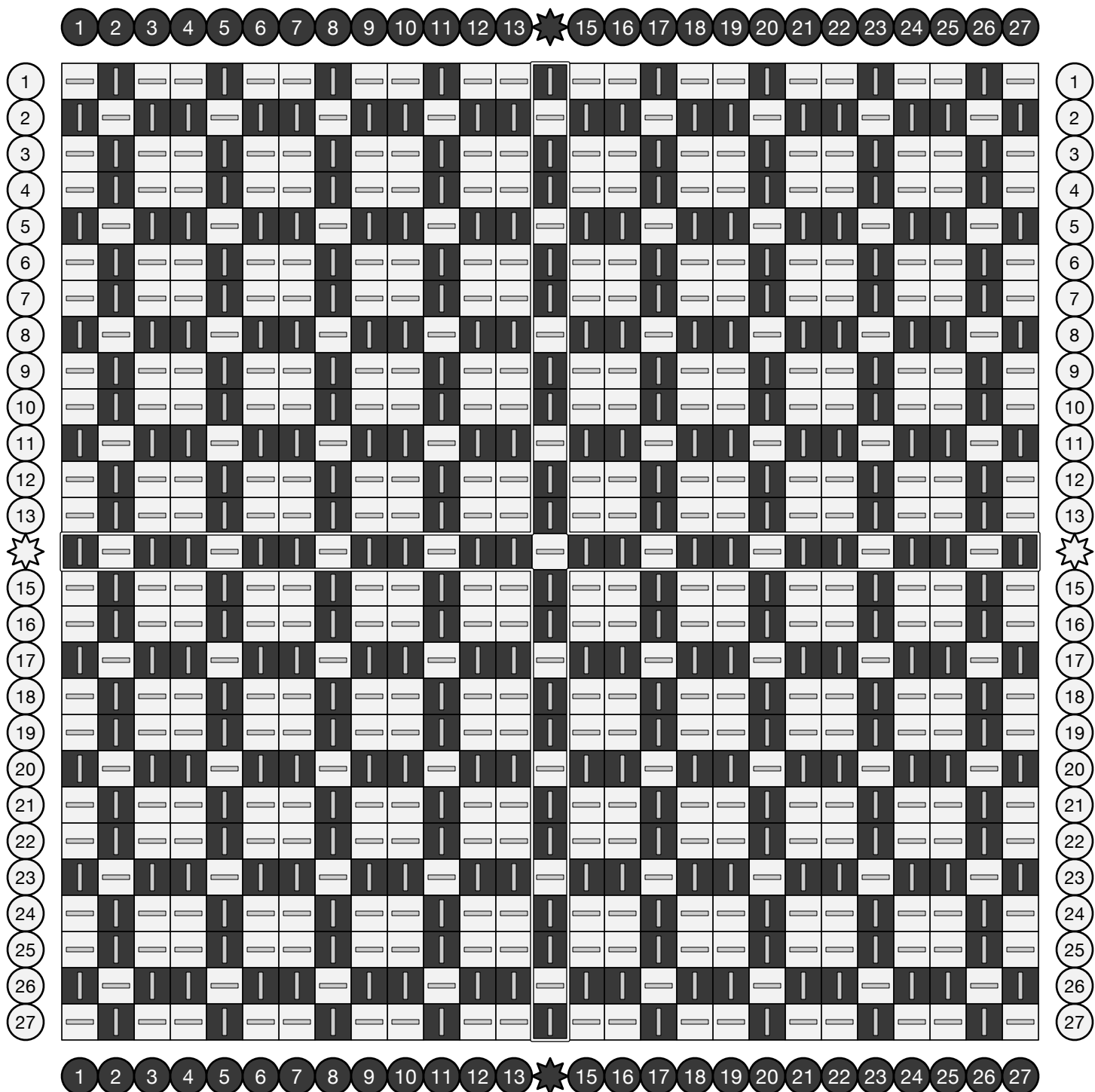
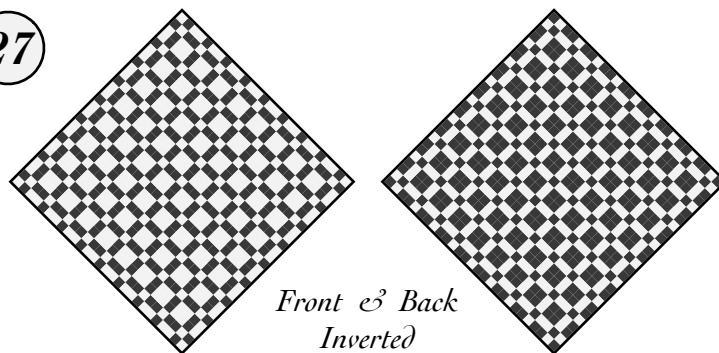
18



Two-One Basketweave

27

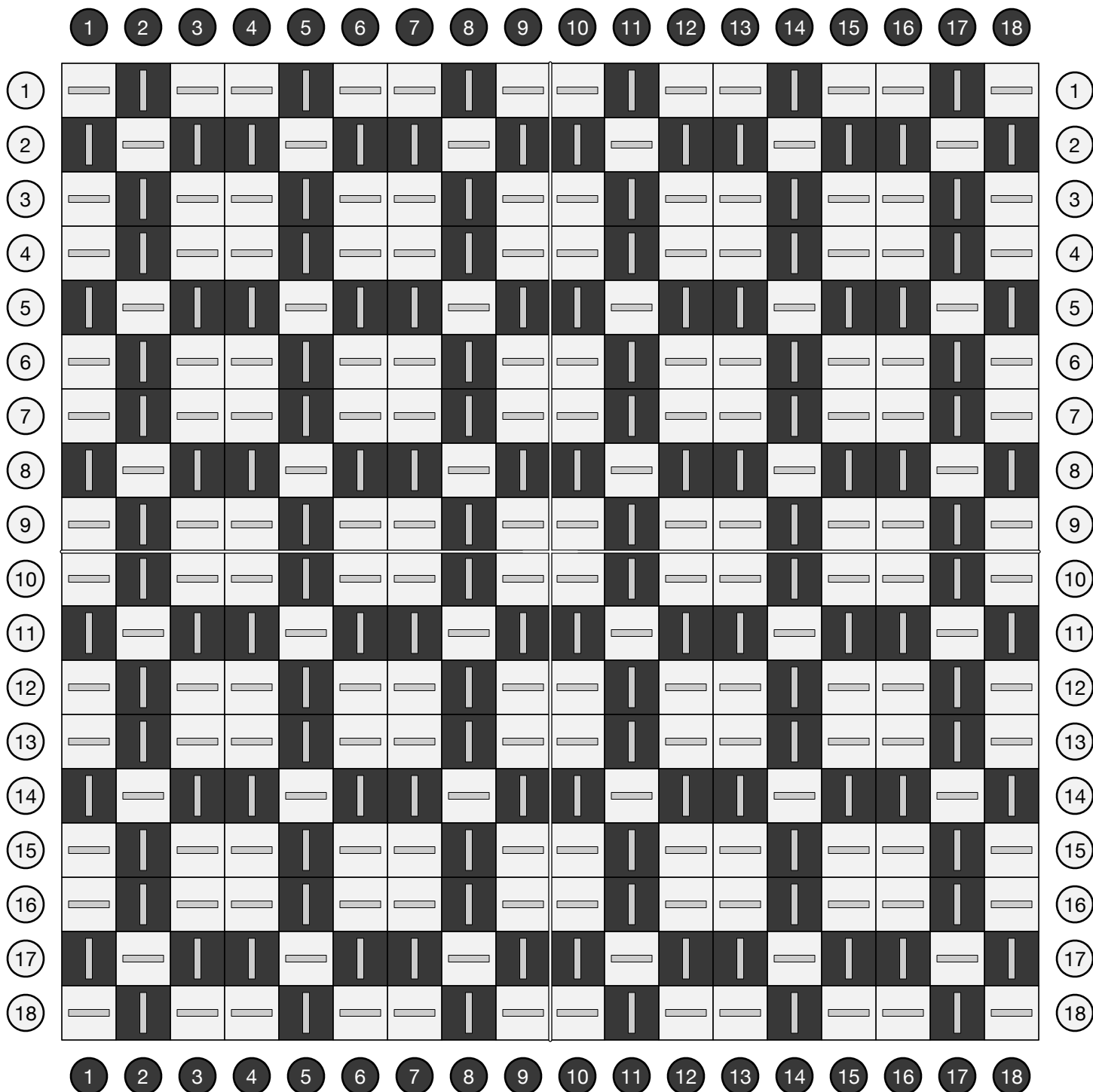
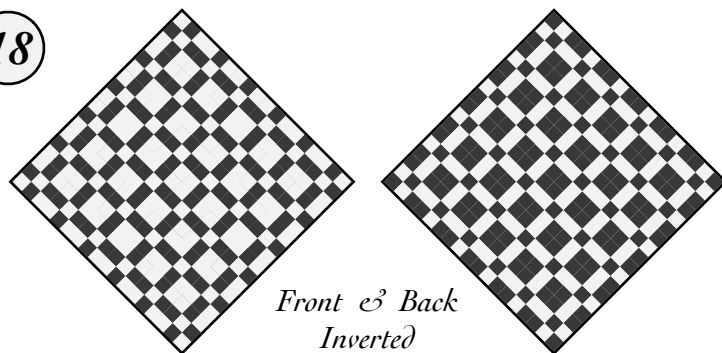
Repeats of two-one weaving alternate with one-two rows to produce a pattern of large and small squares.



Two-One Basketweave

18

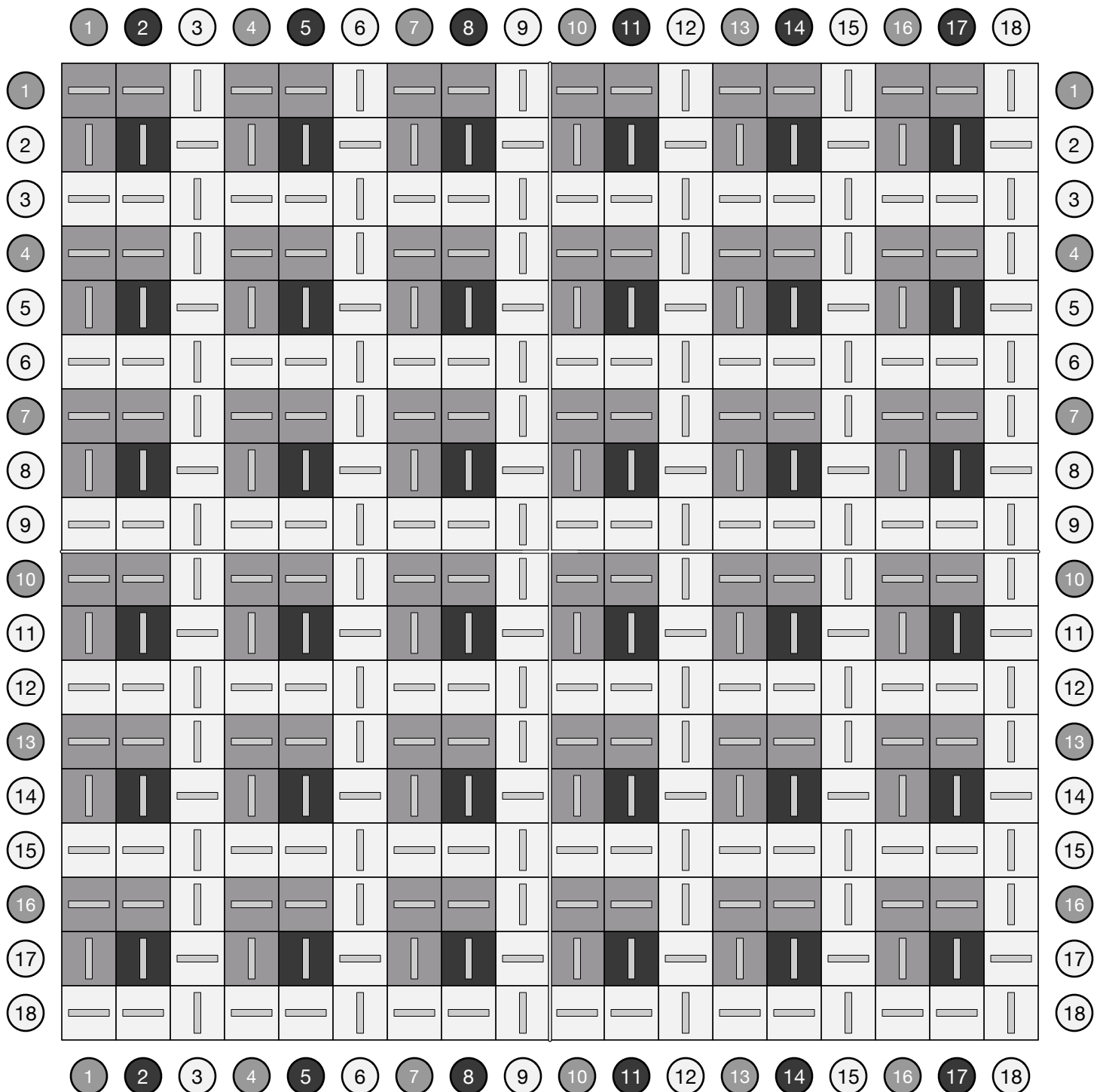
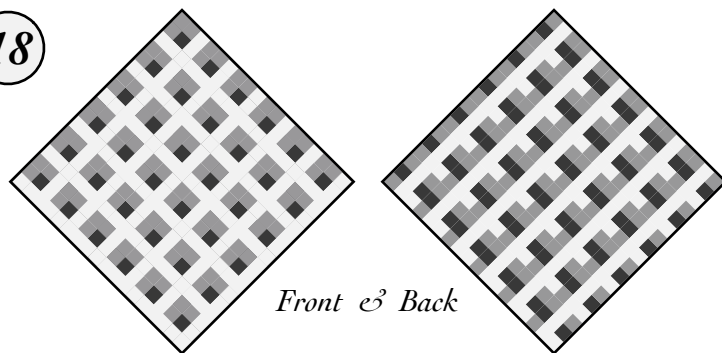
Repeats of two-one weaving alternate with one-two rows to produce a pattern of large and small squares.



Two-One Basketweave Grid

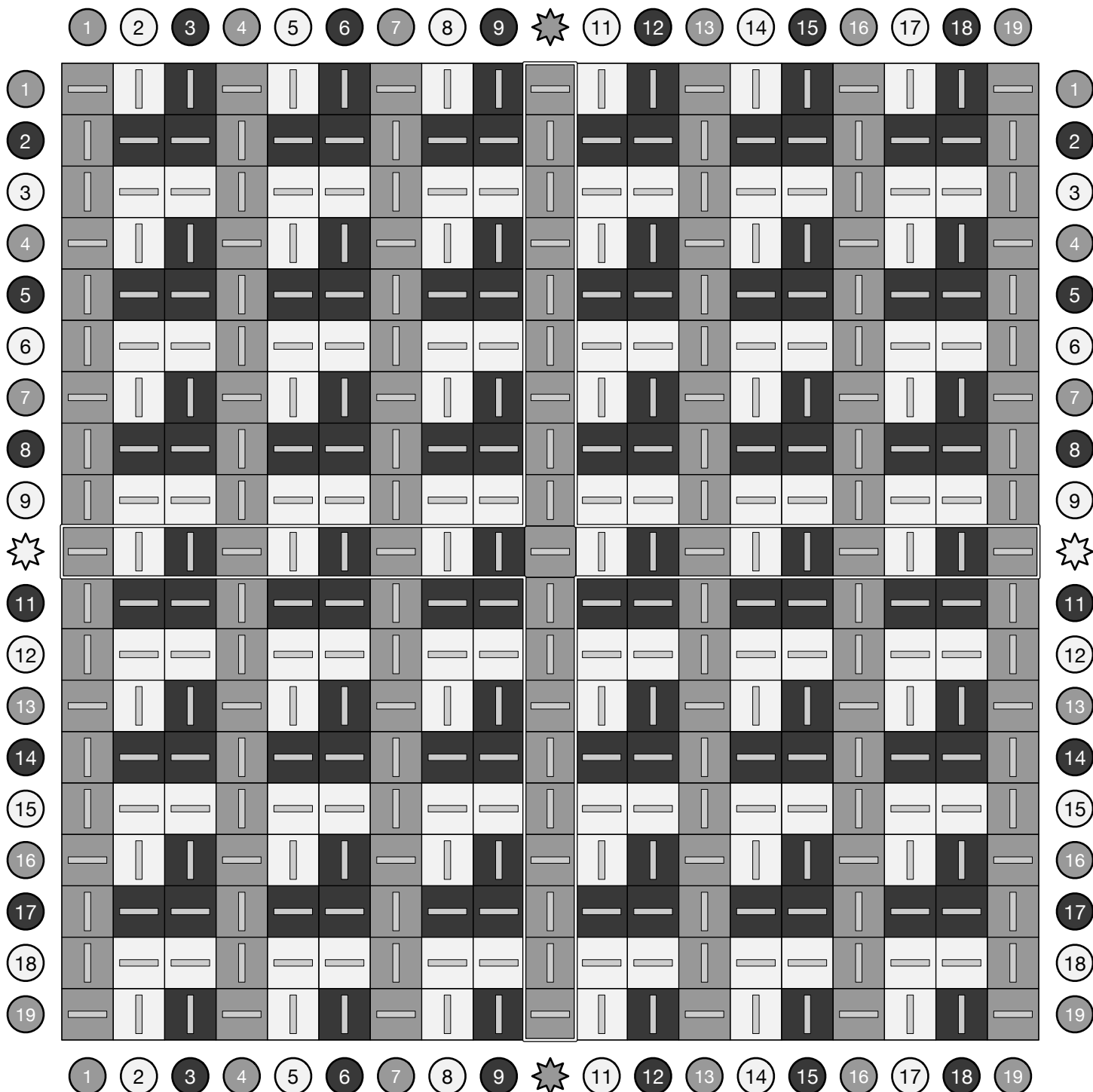
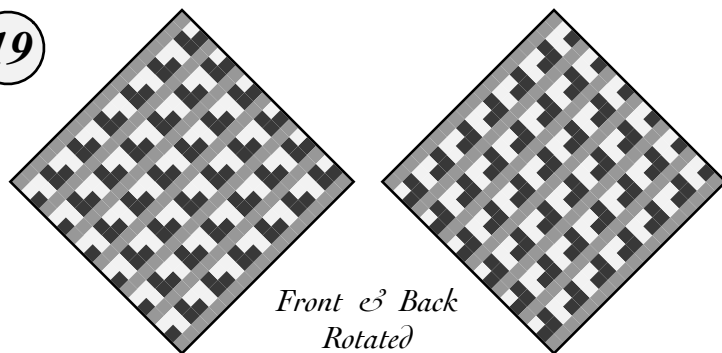
18

Repeats of two-one weaving alternate with one-two rows to produce a pattern of stripes and chevrons.



Two-One Basketweave Bands 19

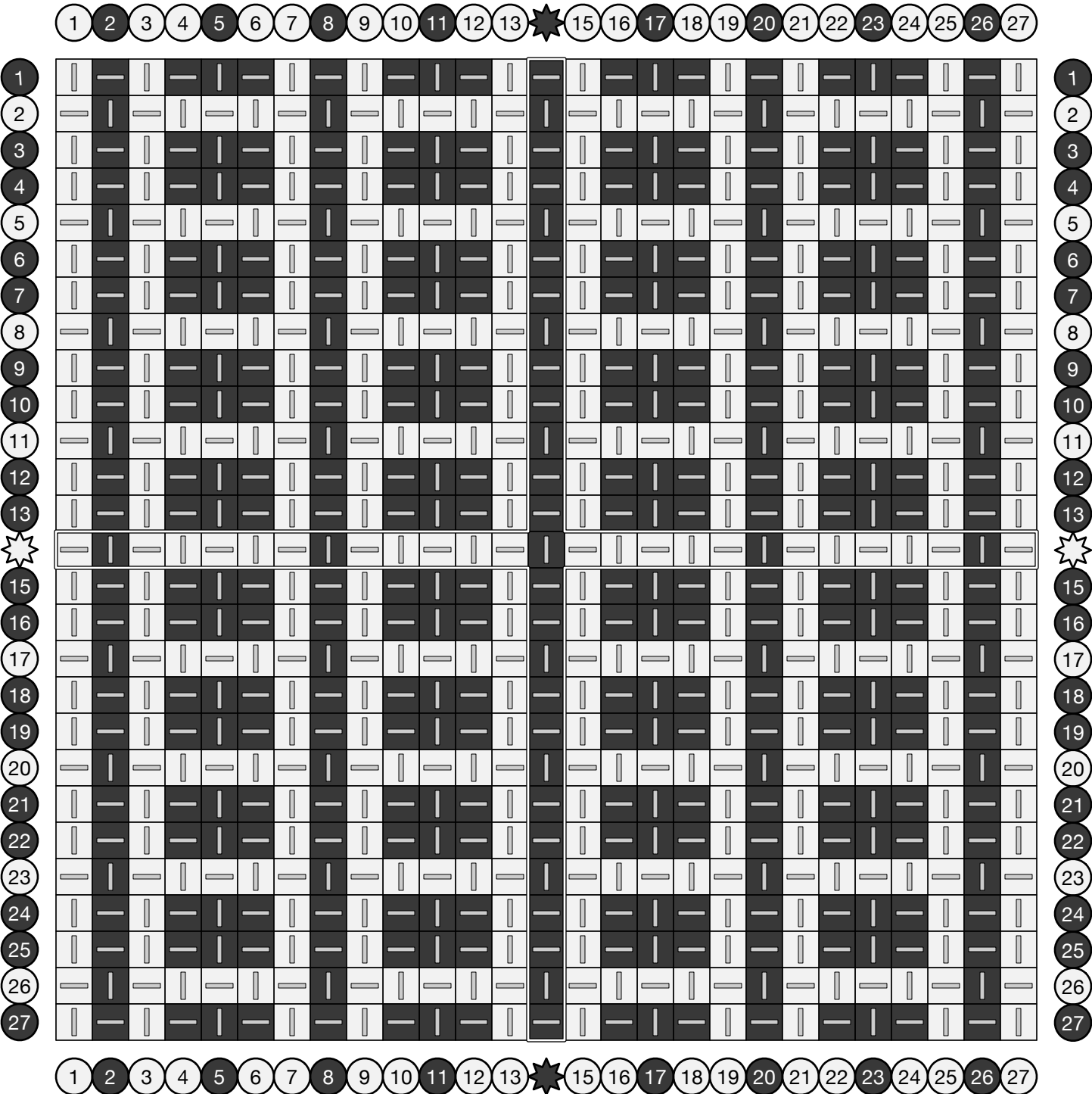
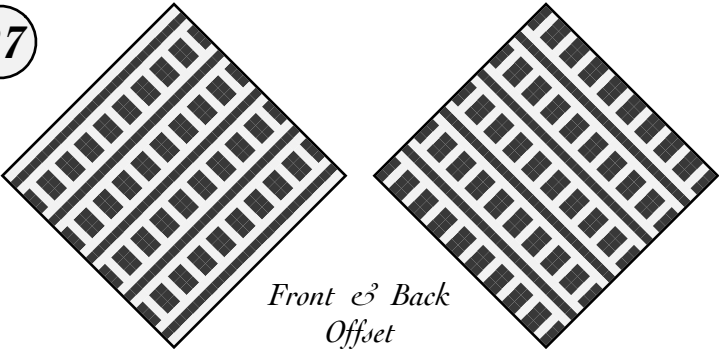
Repeats of two-one weaving alternate with one-two rows to produce a pattern of stripes and chevrons.



Fragile Ladders

A variation of the basic Ladders design with repeating double-weft rows.

27



Chunky Ladders

A variation of the basic Ladders design with repeating double-weft rows.

27

